

Contact us

T: 0151 208 8778

E: info@cube7interiors.co.uk

W: www.cube7interiors.co.uk



Northern Head Office:

Cube7 Interiors Limited,
Unit 5, Claremont Buildings,
Old Clatterbridge Road,
CH63 4JB



02



Contents

07

Cube Blue Single Glaze

45

Cube Green Double Glaze

21

Cube Blue Double Glaze

59

Cube Red Fire Screen

33

Cube Crittall Glaze

67

Glass Doors

Cube7 is a specialist glass partitioning company established in 2005, based in the North West.

We are a company that supply and install a wide range of single and double glazed, fire and acoustic partitioning including glass doors, glazed fire doors and office screens. We pride ourselves on offering exceptional service, unique design and the highest quality products.

We supply and install our own glass partitioning systems as well as a variety of approved suppliers including Komfort, Neslo, Ocula and Apton. Our glass partition systems include acoustic screens, fire screens, glass doorsets, all manufactured within the UK.

Our installation team comprises 15 experienced joiners and glaziers, fully equipped with the knowledge to

overcome obstacles on their own. All of our joiners are CSCS qualified in joinery, 5-day SMSTS H&S and 100% English speaking. Their record speaks for themselves and their ability to install glazed partitioning, doorsets, solid partitioning, suspended ceilings, skirting, kitchens and much more.

This is why we offer our full office fit-out arm – for clients that need a mix of trades all wrapped into one and managed by one of our experienced project managers.

By choosing us and combining the design and build of your office, it puts everything all under one roof. The in-house trades we have means the only trades we subcontract out are the electrics, plumbing, air conditioning and anything specialist.





Liverpool John Moores University





Cube Blue Single Glaze

Cube7 single glazed frameless glass partitioning is a great way to allow light into a work environment, yet effectively provides protected workplace zones wherever concentration and creative thinking might flourish.

Available in either straight lines, facets, or the foremost sleek curves, Cube7's maximum glass and minimal framework, give the office a taste of luxury and professionalism.

26mm minimal head and base sections, discreet glass to glass joint options, from non-fire rated to 30mins. Our most modern system gives a frameless glass wall effect.



Cube Blue Single Glaze



Capital Building, Liverpool

Performance

**Dimensions:**

Height up to 3600mm

**Fire ratings:**

Up to E30 (integrity only)

**Acoustics:**

Up to 40dB (Rw)*

**Structure:**

Up to Severe Duty

**Deflection head:**

Up to +/-25mm

**Door options:**

- Timber doors
- Nuclear single glazed doors
- Atom double glazed doors
- Orbit glass sliding doors

**Glass type options:**

- 10/12mm Toughened
- 10.8/12.8/14.8mm Acoustic Lam
- 15mm Toughened

**Available with:**

- Blinds
- Manifestations
- Graphics
- Switch Glass
- Crittall Style Bars

Acoustic performance of Single Glazed Blue

Glass configuration	dB Rating
1 x 10mm Toughened Glass	35dB
1 x 12mm Toughened Glass	36dB
1 x 12.8mm Laminated Glass	38dB
1 x 12.8mm Acoustic Lam Glass	40dB

Airborne sound insulation testing of glazed partitioning in accordance with Acoustic BS EN ISO 10140-2 : 2010

A close-up photograph of a glass joint in a partitioning system. The image shows two dark, rectangular glass panels meeting at a central vertical joint. The joint is secured with a metal clip or gasket. The background is a light, neutral color.

Glass | Line Joint

Cube Blue Single Glaze

K30:130 panel partitions specification

Manufacturer:

Cube7 Interiors, Claremont Buildings, Old Clatterbridge Road, Wirral, CH63 4JB

Contact:

dave@cube7interiors.co.uk

Product reference:

BLUE Single Glazed

Partition height:

Varies

Head/abutment channel finish:

26 x 30mm Single glazed head Channel (Code Q89)

Abutment detail:

2 part Single glazed base Channel (Codes Q87 & Q86)

Base detail:

26 x 30mm 2 part Single glazed base Channel (Codes Q87 & Q86)

Glazing:

Type: 10 to 12.8mm Glass to suit acoustic requirement below

Joints:

1 Joint

Manifestation:

Tbc

Deflection heads:

Please consult with Cube7 if required

Doorsets:

Compatible with Cube Atom, Nuclear, Orbit or Phoenix Doors

Reference

Refer to Door Schedule, Internal Door Elevations and Doors Speciation for information on doors.

Fire performance:

- Fire resistance to BS 476-22: None fire rated
- Fire propagation to BS 476-6: Non-rated
- Spread of flame, to BS 476-7: Class 1

Acoustic Performance:

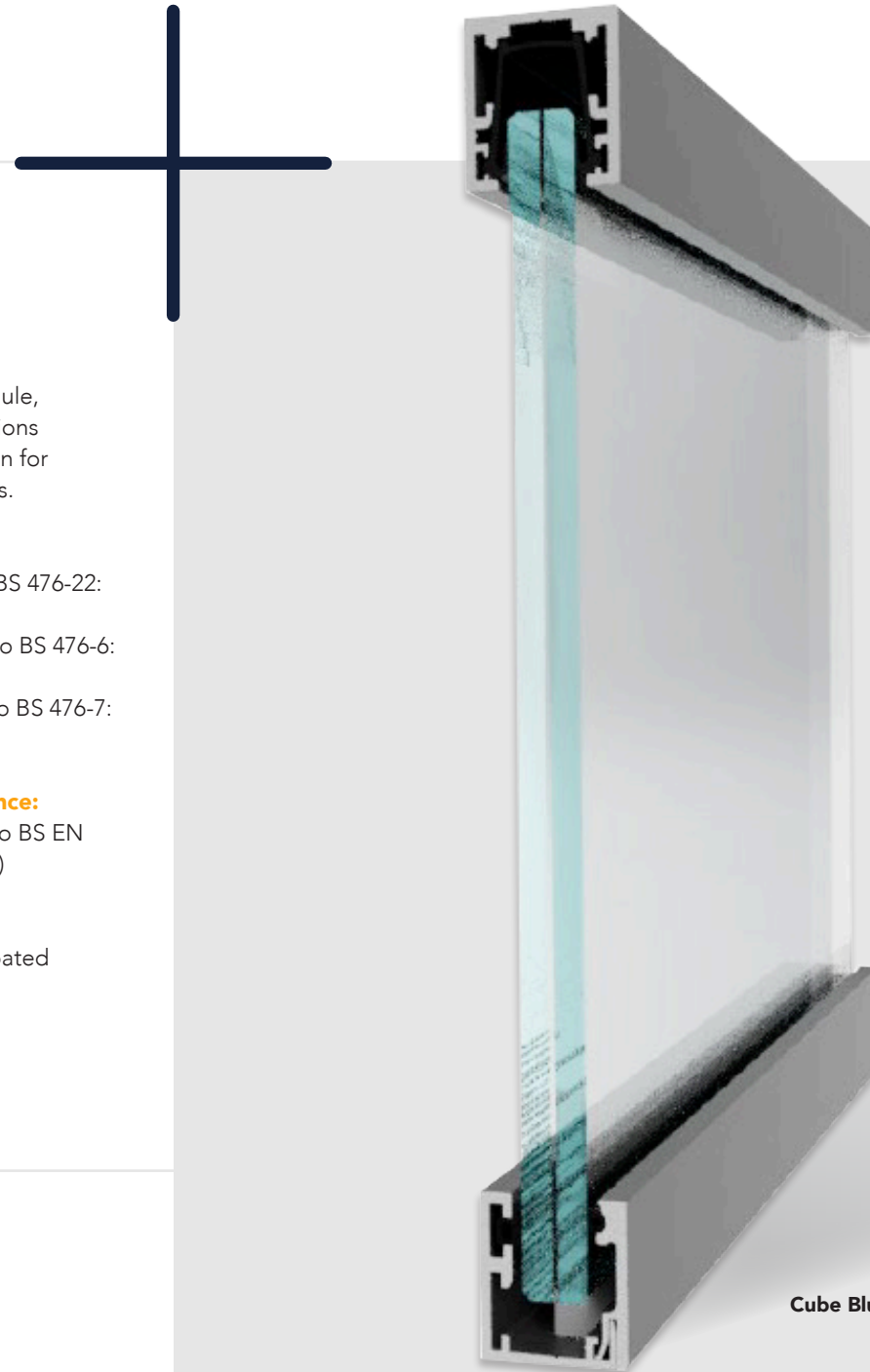
Acoustic insulation to BS EN ISO 140-3: 40dB (Rw)

Frame Finish:

Polyester powder coated

Colour:

RAL tbc



Cube Blue Single Glaze



Cube Blue Single Glaze

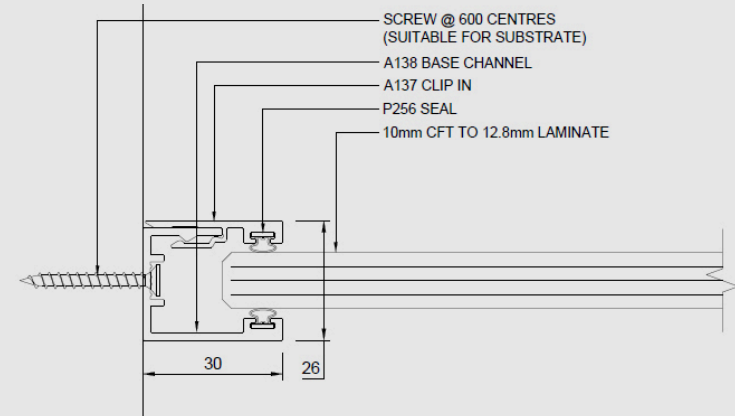
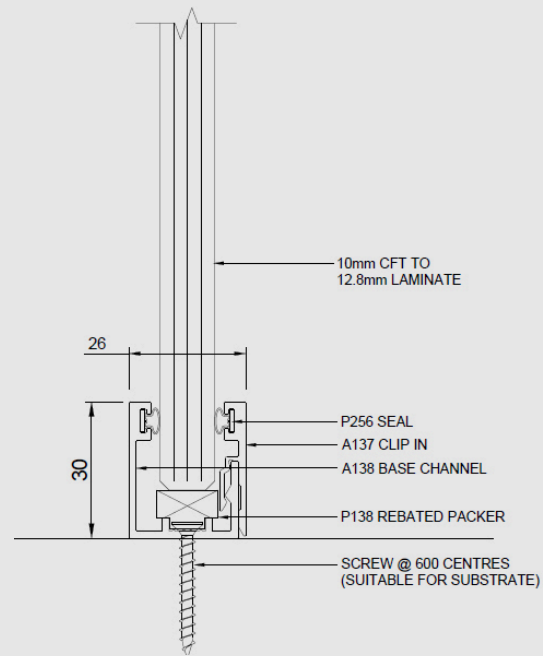
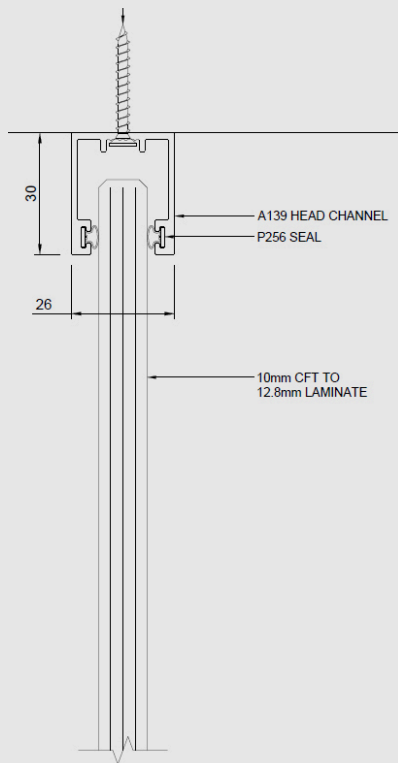


Atlas, Deeside



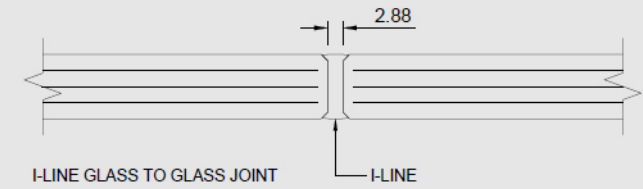
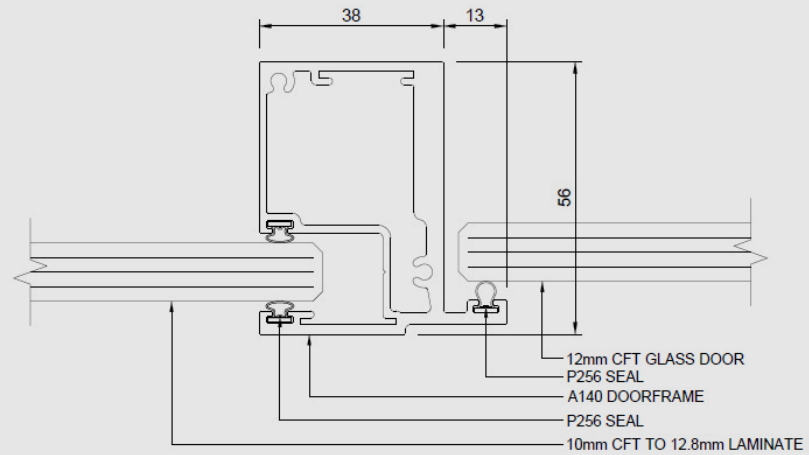
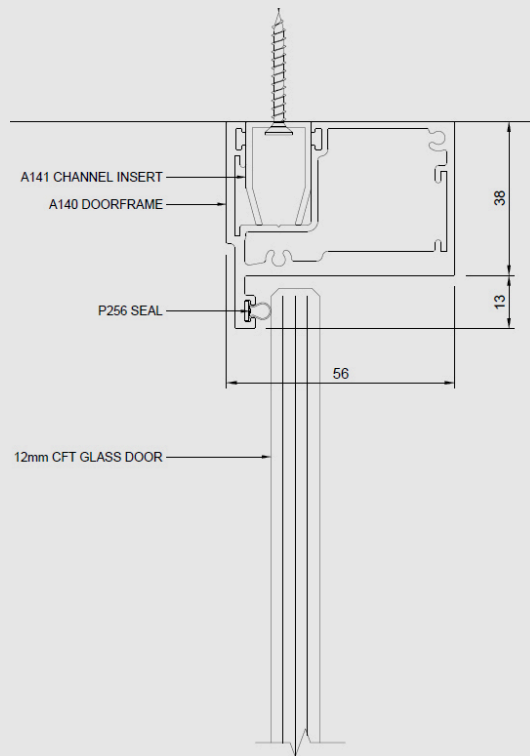
Pure Legal, Liverpool

Drawing details



Cube Blue Single Glaze

Drawing details





Cube Blue Single Glaze



John Turner, Lancaster University



Tinted Glass



Cube Blue Single Glaze







Cube Blue Double Glaze

This double glazed frameless partitioning gives the illusion of vast areas of unsupported glass.

It's our most acoustic system, providing privacy to areas of sensitive information and quiet zones. Cube Blue is a great way to allow light into a work environment.

Cube Blue Double glazed frameless partitioning is ideal for meeting rooms, office fronts and breakout areas. The partitioning is easily installed and can incorporate integral blinds controlled on manual turn nobbs or automatic switch/remotes blinds.

With 26mm minimal head and base sections, and discreet glass-to-glass joint options from non-fire rated to 30min fire rated. It's our most modern system, giving a frameless glass wall effect.

Popular for director's offices, meeting rooms, board rooms, hospitals and educational settings.

Other options include straight lines, facets, or sleek curves. Cube7's maximum glass and minimal framework give the office a taste of luxury and professionalism.

Willmott Dixon, Merseyside Police



Cube Blue Double Glaze



Atlas, Deeside

Performance

**Dimensions:**

Height up to 3600mm

**Fire ratings:**

Up to E30 (integrity only)

**Acoustics:**

Up to 54dB (Rw)*

**Structure:**

Up to Severe Duty

**Deflection head:**

Up to +/-25mm

**Door options:**

- Timber doors
- Nuclear single glazed doors
- Atom double glazed doors
- Orbit glass sliding doors

**Glass type options:**

- 10/12mm Toughened
- 10.8/12.8/14.8mm Acoustic Lam
- 15mm Toughened

**Available with:**

- Blinds
- Manifestations
- Graphics
- Switch Glass
- Crittall Style Bars



Glass | Line Joint

Cube Blue Double Glaze

K30:130 panel partitions specification

Manufacturer:

Cube7 Interiors, Claremont Buildings, Old Clatterbridge Road, Wirral, CH63 4JB

Contact:

dave@cube7interiors.co.uk

Product reference:

BLUE Double Glazed

Partition height:

Varies

Head/abutment channel finish:

105 x 30mm Double glazed head Channel (Code Q21)

Abutment detail:

2 part Double glazed base Channel (Codes Q22 & Q23)

Base detail:

105 x 30mm 2 part Double glazed base Channel (Codes Q22 & Q23)

Glazing:

Type:

2 x 10 to 12.8mm Glass to suit acoustic requirement below

Joints:

1 Joint

Manifestation:

Tbc

Blinds:

Tbc

Deflection heads:

Please consult with Cube7 if required

Doorsets:

Compatible with Cube Atom, Nuclear, Obit or Phoenix Doors

Reference

Refer to Door Schedule, Internal Door Elevations and Doors Speciation for information on doors.

Fire performance:

- Fire resistance to BS 476-22: None fire rated
- Fire propagation to BS 476-6: Non-rated
- Spread of flame, to BS 476-7: Class 1

Acoustic Performance:

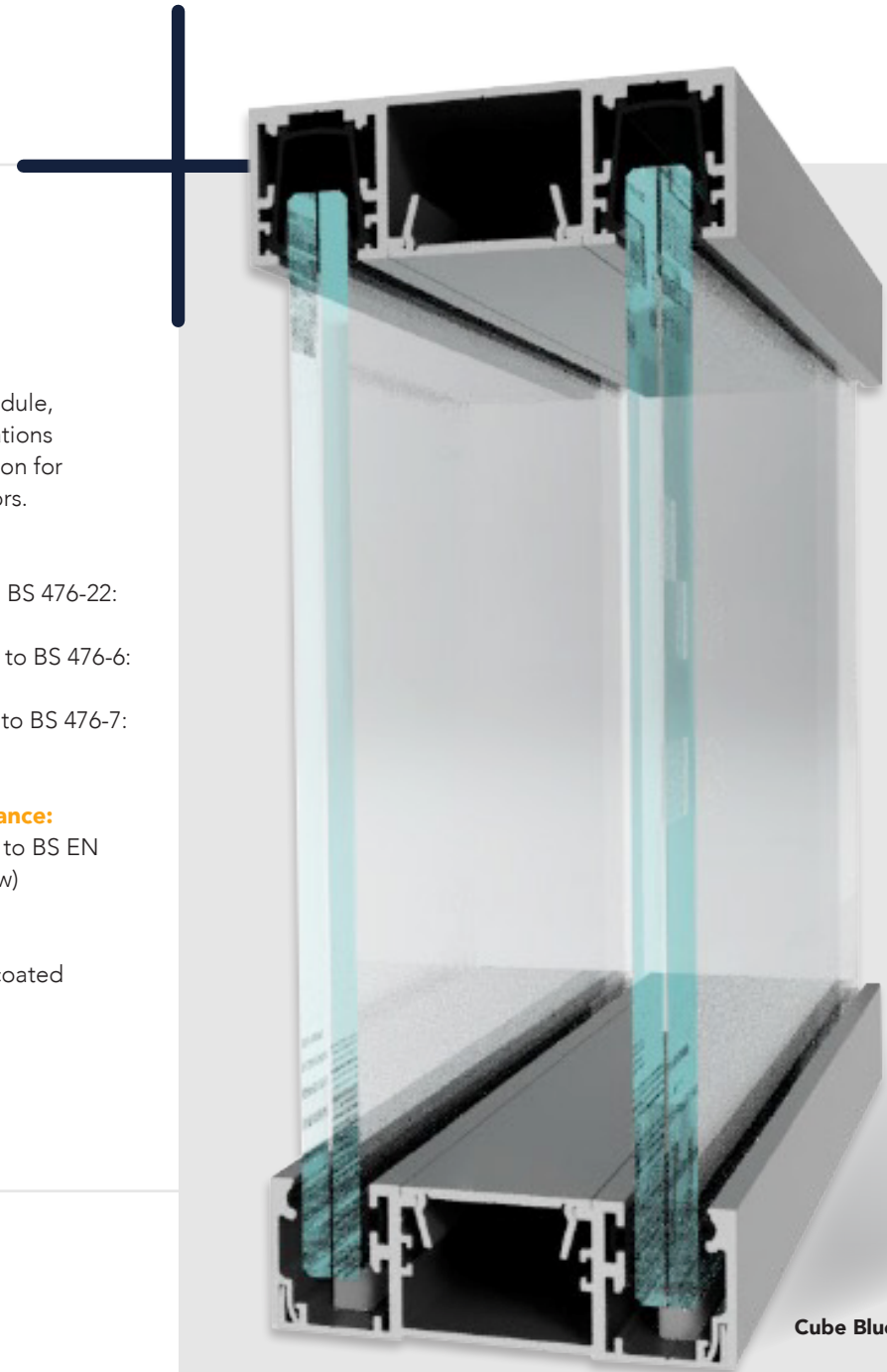
Acoustic insulation to BS EN ISO 140-3: 48dB (Rw)

Frame Finish:

Polyester powder coated

Colour:

RAL tbc



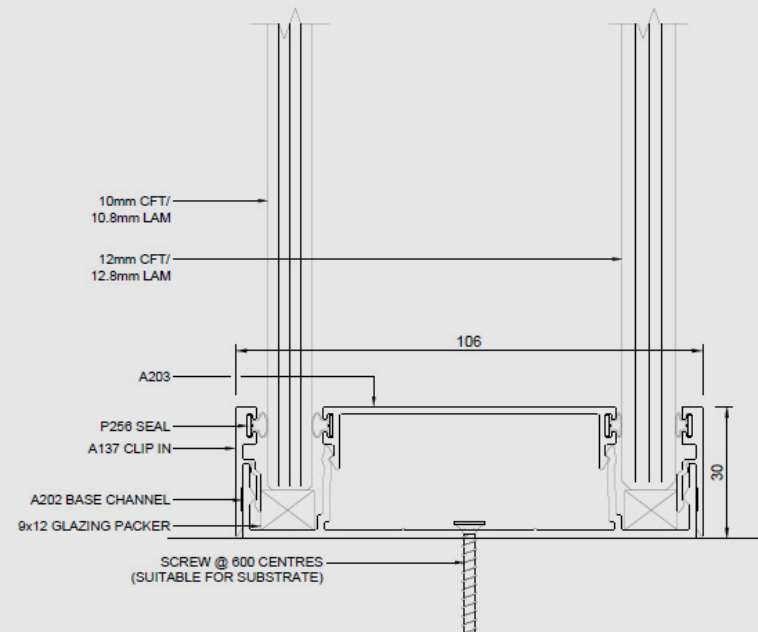
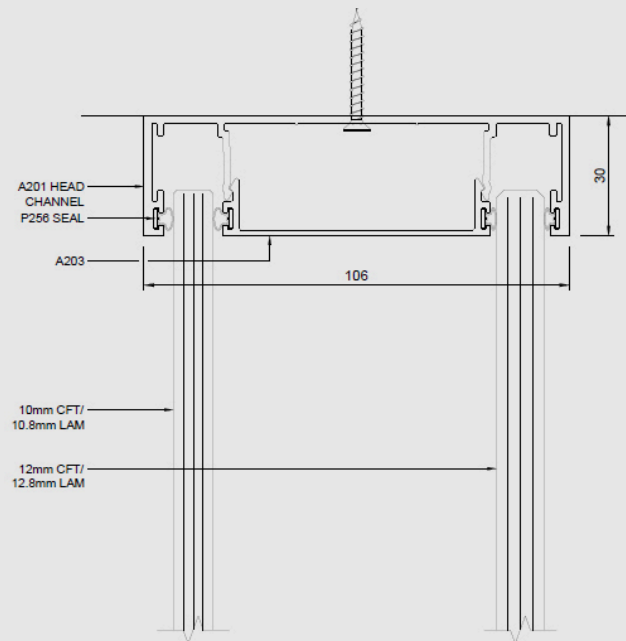
Cube Blue Double Glaze



Cube Blue Double Glaze

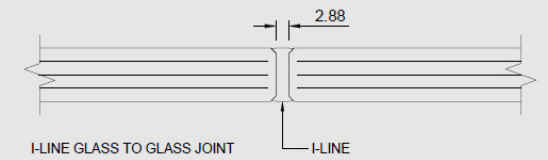
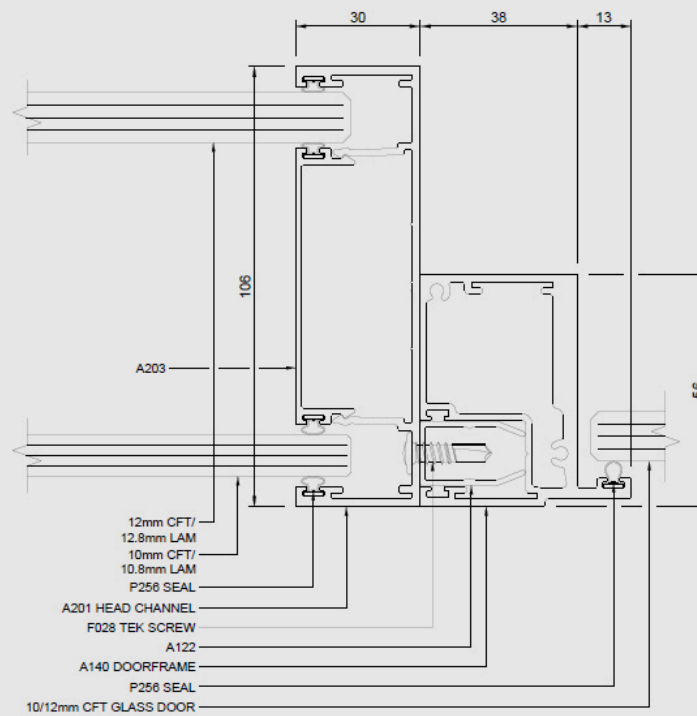
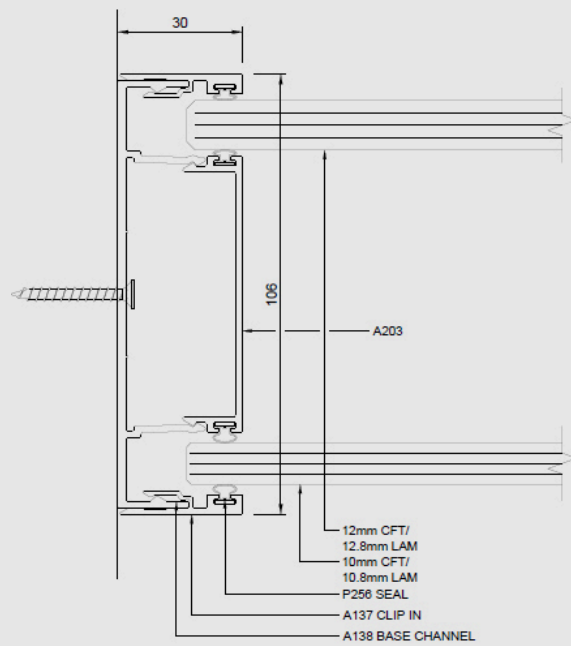


Drawing details



Cube Blue Double Glaze

Drawing details



30



Cube Blue Double Glaze



Trustland, Unilever



Merseyside Police, Willmott Dixon





Cube Crittall Glaze

Cube7 Crittall banded glazing is the art deco, Chinese style glazing, which is more and more popular today. Available in single glazed or double glazed, black aluminium trims break up the glass to give this banded effect.

Crittall partitioning is a great way to allow light into a work environment yet effectively provides protected workplace zones wherever concentration and creative thinking might flourish. Available in either straight lines, facets, or the foremost sleek curves, Cube7's maximum

glass and minimal framework give the office a taste of luxury and professionalism.

With 26mm minimal head and base sections, as well as discreet glass-to-glass joint options, our most modern systems give a designers look to glass partitioning.

Ideal for a busy office, school classroom screen, hospital glass screen or retail. Compatible with integral blinds, manifestation and switch glass.

John Turner, Lancaster University





Cube Crittall Glaze



Manchester Matrix Project

Performance

**Dimensions:**

Height up to 3600mm

**Fire ratings:**

Up to E30 (integrity only)

**Acoustics:**

Up to 40dB (Rw)*

**Structure:**

Up to Severe Duty

**Deflection head:**

Up to +/-25mm

**Door options:**

- Timber doors
- Nuclear single glazed doors
- Atom double glazed doors
- Orbit glass sliding doors

**Glass type options:**

- 10/12mm Toughened
- 10.8/12.8/14.8mm Acoustic Lam
- 15mm Toughened



John Turner, Lancaster University

Cube Crittall Glaze

K30:130 panel partitions specification

Manufacturer:

Cube7 Interiors, Claremont Buildings, Old Clatterbridge Road, Wirral, CH63 4JB

Contact:

dave@cube7interiors.co.uk

Product reference:

BLUE Single Glazed

Partition height:

Varies

Head/abutment channel finish:

26 x 30mm Single glazed head Channel (Code Q89)

Abutment detail:

2 part Single glazed base Channel (Codes Q87 & Q86)

Base detail:

26 x 30mm 2 part Single glazed base Channel (Codes Q87 & Q86)

Glazing:

Type:

10 to 12.8mm Glass to suit acoustic requirement below

Joints:

30mm Crittall Bar

Manifestation:

Tbc

Blinds:

Tbc

Deflection heads:

Please consult with Cube7 if required

Doorsets:

Compatible with Cube Atom, Nuclear, Obit or Phoenix Doors

Reference

Refer to Door Schedule, Internal Door Elevations and Doors Speciation for information on doors.

Fire performance:

- Fire resistance to BS 476-22: None fire rated
- Fire propagation to BS 476-6: Non-rated
- Spread of flame, to BS 476-7: Class 1

Acoustic Performance:

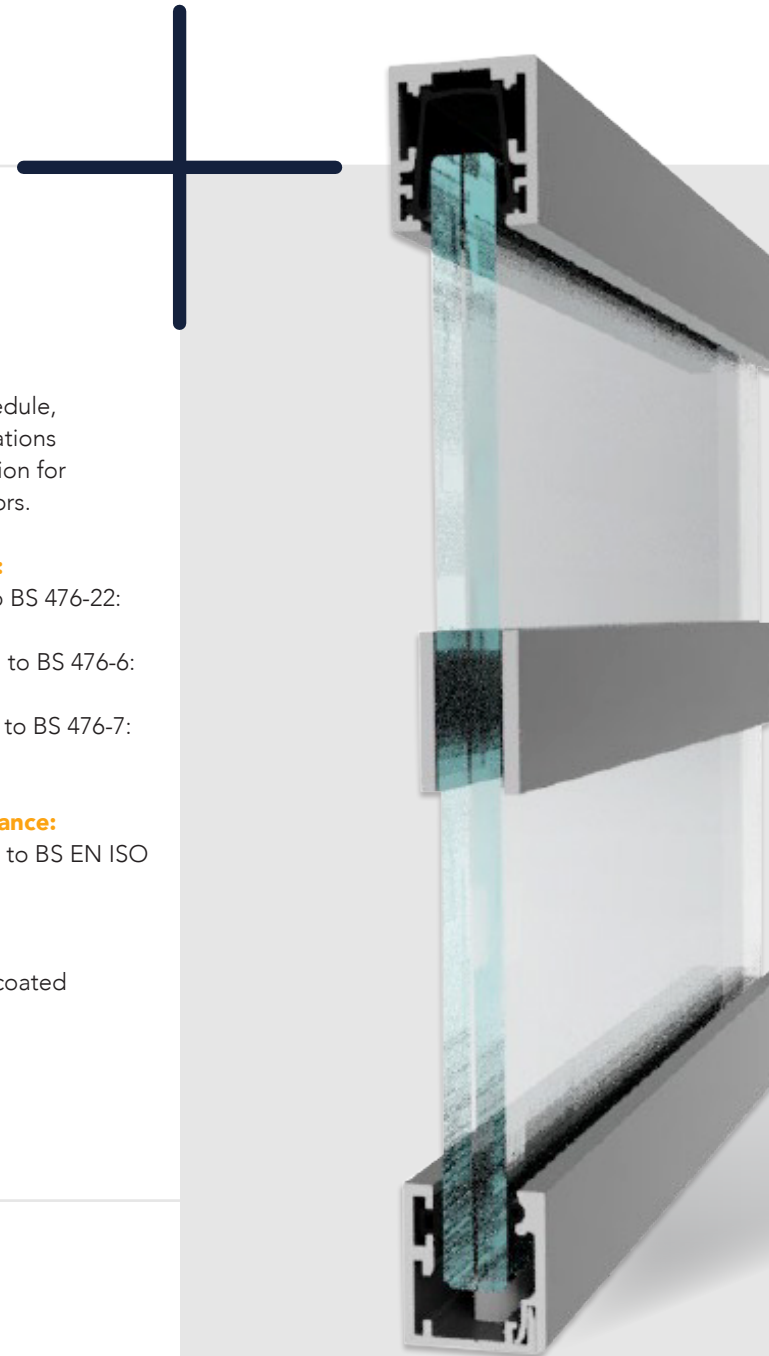
Acoustic insulation to BS EN ISO 140-3: 40dB (Rw)

Frame Finish:

Polyester powder coated

Colour:

RAL 9005





Cube Crittall Glaze

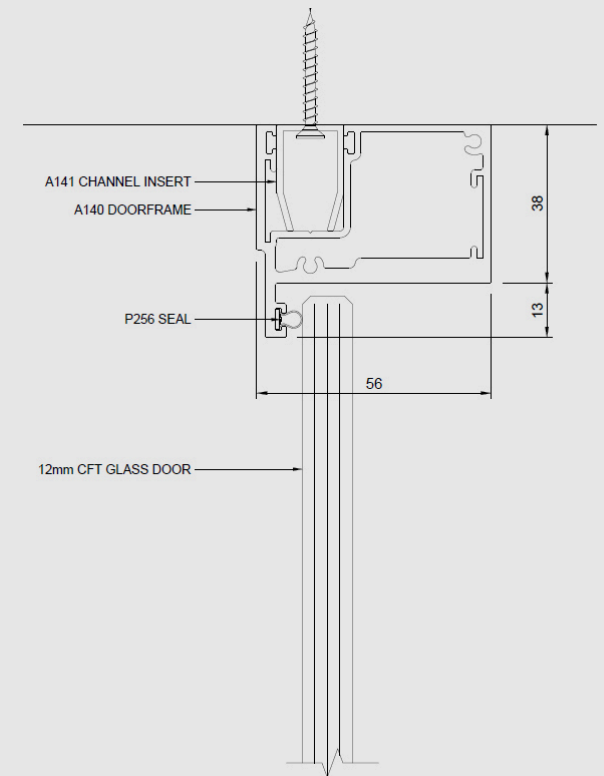
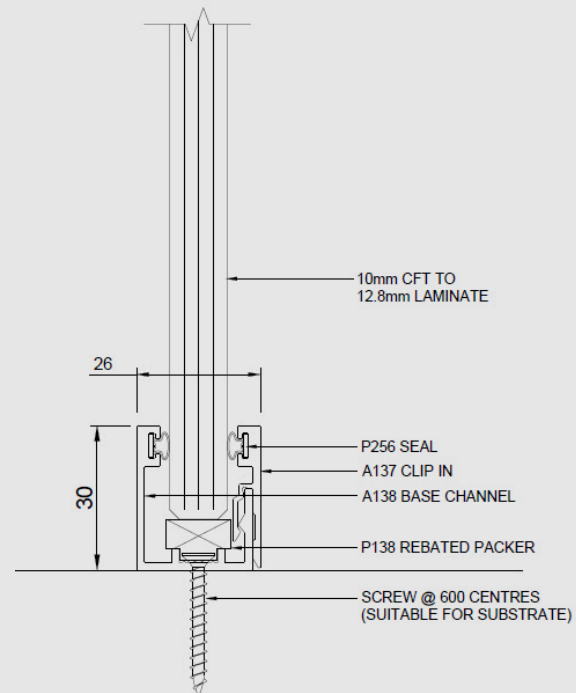
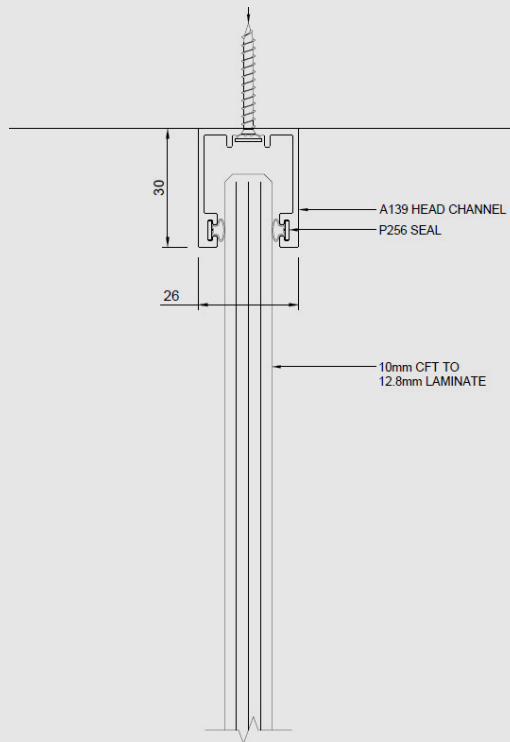


John Turner, Lancaster University



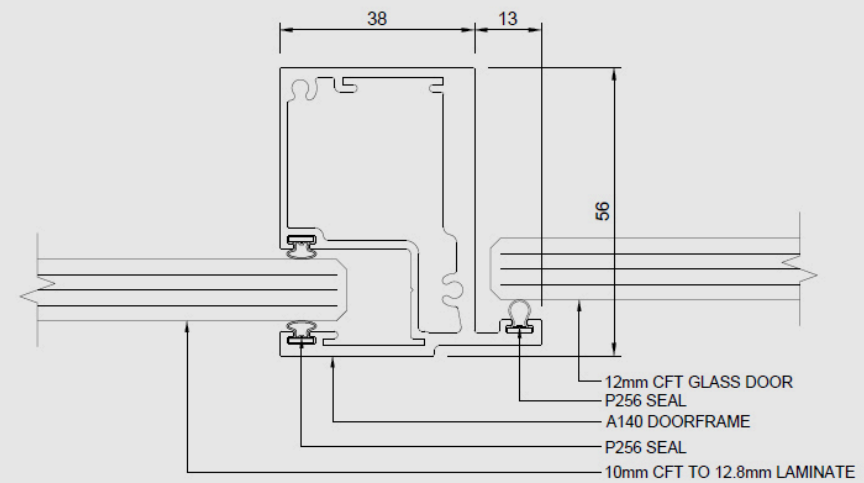
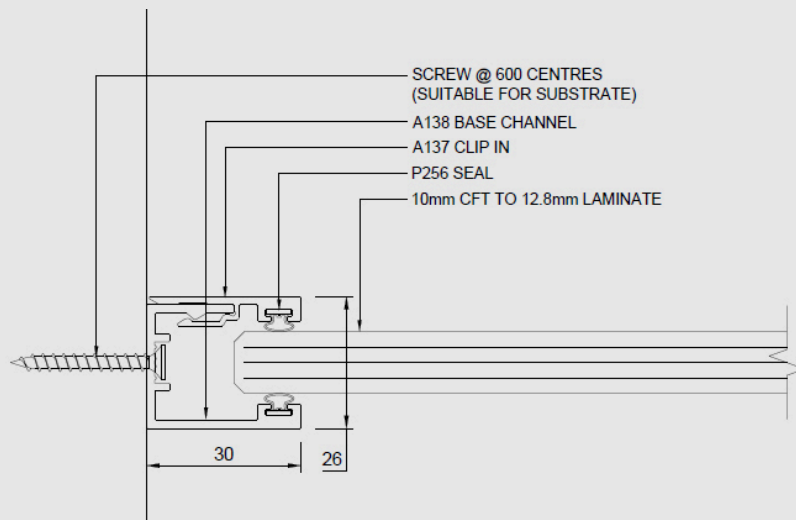
Manchester Matrix Project

Drawing details



Cube Crittall Glaze

Drawing details





Cube Crittall Glaze





Cube Green Double Glaze

Framed all round partitioning system with a maximum module size of 1.2m wide before an aluminium dry joint.

Our modular framed partitioning system has a lot of benefits. It uses a 32mm aluminium trim at the glass joints to provide a system with transoms and mullions. These joints clamp the glass on all 4 sides, which means we can offer different glass types, which would suit some projects better.

Cube Green is also available in solid partitioning, fully demountable and relocatable. We simply swap the glass for plasterboard and the aluminium trim means no need for a plastered finish, just decorate.

GMPTE, Manchester



Cube Green Double Glaze



Performance



Dimensions:

Height up to 5500mm



Fire ratings:

Up to E60 (integrity only)



Acoustics:

Up to 41dB (Rw)*



Structure:

Up to Severe Duty



Deflection head:

Up to +/-25mm



Door options:

- Timber doors
- Nuclear single glazed doors
- Atom double glazed doors
- Orbit glass sliding doors



Glass type options:

- 6mm Toughened
- 6.4mm Lam



Available with:

- Blinds
- Manifestations
- Graphics
- Switch Glass

Acoustic performance of Cube Green

Glass configuration	dB Rating
1 x 6mm Toughened Glass	32dB
1 x 10mm Toughened Glass	35dB
2 x 6mm Toughened Glass	40dB
1 x 6mm and 1 x 6.4mm Lam Glass	41dB

Airborne sound insulation testing of glazed partitioning in accordance with Acoustic BS EN ISO 10140-2 : 2010



Manual Blind Control

Cube Green Double Glaze

K30:130 panel partitions specification

Manufacturer:

Cube7 Interiors, Claremont Buildings, Old Clatterbridge Road, Wirral, CH63 4JB

Contact:

dave@cube7interiors.co.uk

Product reference:

Cube Green DG

Partition height:

Varies

Head/abutment channel finish:

104mm x 30mm Double glazed head Channel (Code T89)

Abutment detail:

104mm x 30mm Double glazed base Channel (Codes T87 & T86)

Base detail:

104mm x 30mm Double glazed base Channel (Codes T87 & T86)

Glazing:

Type:

6 to 6.8mm Glass to suit acoustic requirement below

Joints:

35mm FT trim

Manifestation:

Tbc

Deflection heads:

Please consult with Cube7 if required

Doorsets:

Compatible with Cube Atom, Nuclear, Orbit or Phoenix Doors

Reference

Refer to Door Schedule, Internal Door Elevations and Doors Speciation for information on doors.

Fire performance:

- Fire resistance to BS 476-22: None fire rated (please confirm if required)
- Fire propagation to BS 476-6: Non-rated
- Spread of flame, to BS 476-7: Class 1

Acoustic Performance:

Acoustic insulation to BS EN ISO 140-3: 41dB (Rw)

Frame Finish:

Polyester powder coated

Colour:

RAL tbc



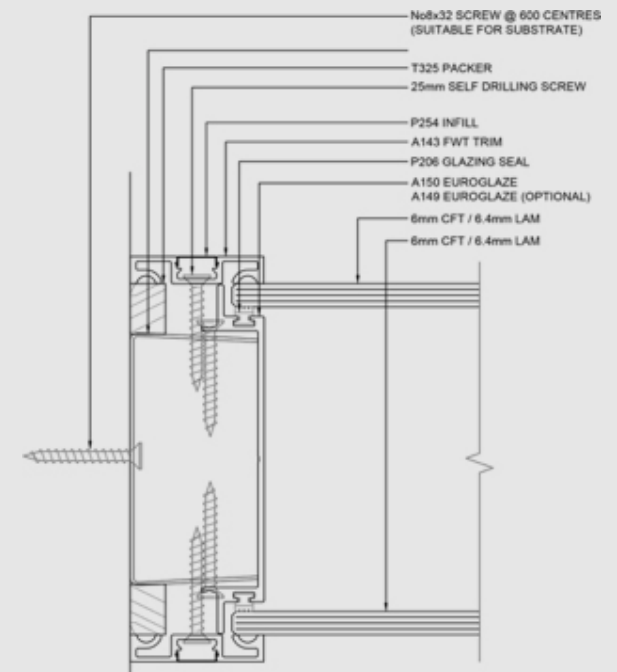
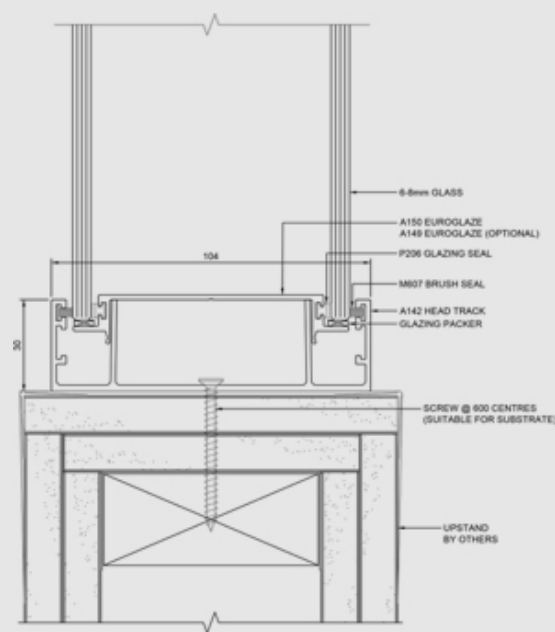
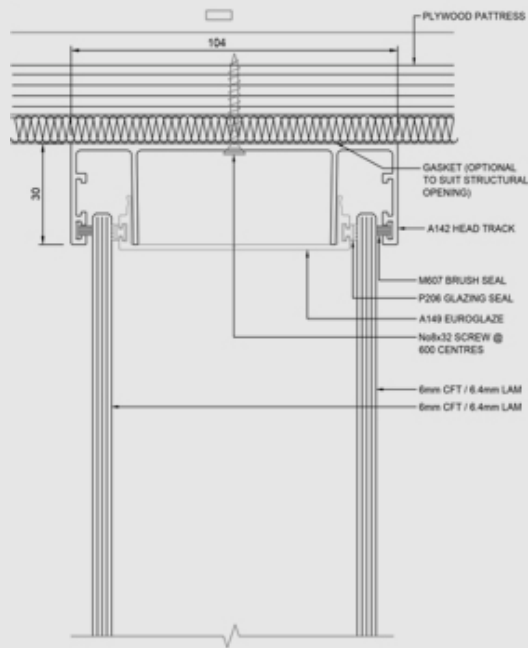
Cube Green Double Glaze



Cube Green Double Glaze

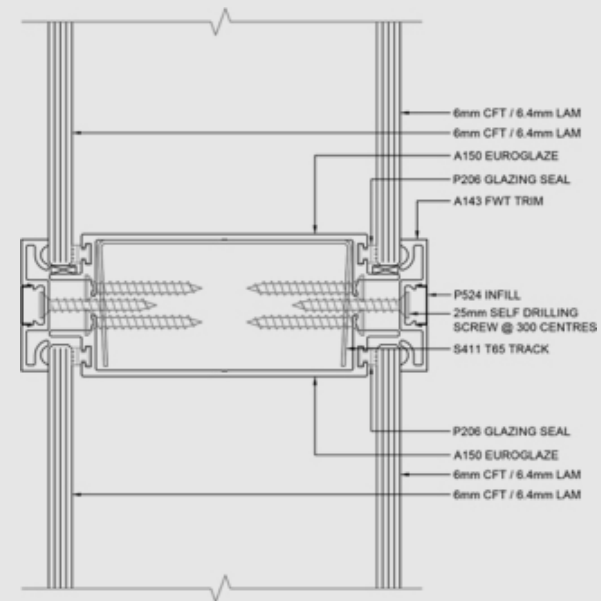
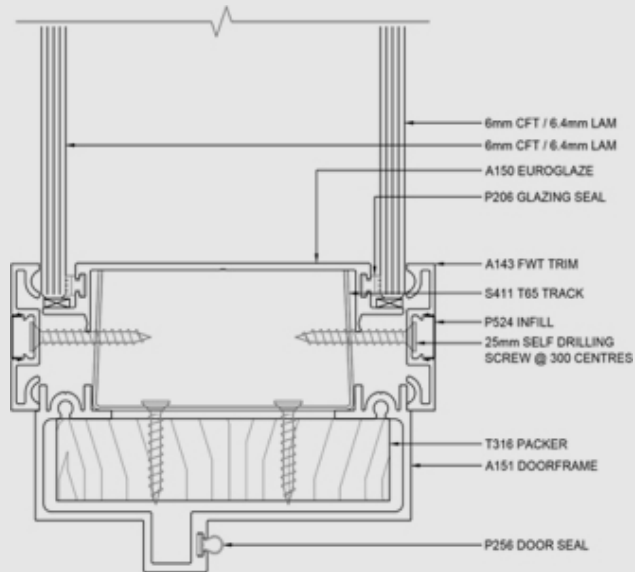


Drawing details



Cube Green Double Glaze

Drawing details





Cube Green Double Glaze





56

Cube Green Double Glaze



Foundation Building



Foundation Building





Cube Red Fire Screen

Our fire rated system provides fire rated glass partitioning with minimal framework and maximum glass. Available in single glazed or double glazed, to a maximum of 51dB.

Available in 30, 60 and 90min for either integrity only or integrity and insulation, our fully tested and certified slimline fire rated partitioning systems are one of the UK's most cost-effective solutions to fire-rated screens, whilst still giving the maximum acoustic performance and keeping the same visual appeal as our non-fire rated systems.

Fire rating for glass comes in two forms; Integrity and Insulation. Integrity (E30) meaning the glass structure will stay in place for the desired period of time, Insulation (EI30) meaning that after that period of time the glass will still be cold and heat would have not transferred through the screen. Integrity/insulation is usually shown at either 30/0, 30/30, 60/0 or 60/60.

Your building regulator or fire officer will have the deciding factor on the fire rating of the screen.



Cube Red Fire Screen





Cube Red Fire Screen



Atlas, Deeside



Atlas, Deeside



Atlas, Deeside

Cube Red Fire Screen







Glass Doors

No glazed partition is complete without a glass door to match.

Accomplish your fully glazed office with a glass door which will give maximum glass, minimal framework yet keeping the acoustic performance of the glazed screen. Cube7 offers 4 styles of glass door which all incorporate within the glazed partitioning and aluminium door frames.

All doors are available in single or double doors and with a wide range of ironmongery, locking options, fire rated glass, automation and much more.



Nuclear Single Glazed Door



NCRO, Chester

Nuclear Single Glazed Door

The Nuclear door is a single glazed glass door made from 1 x 10-12mm glass to give a maximum of 38dB.

The nuclear glass door integrates with all of our partitioning systems to give a flush glass wall look. It's mainly used when you have Blue SG partitioning, it gives the best acoustic performance for a single glazed door on the market.

Nuclear can be either a framed glass leaf doorset or a completely frameless glass door without a door frame.



Nuclear Single Glazed Door





Nuclear Single Glazed Door



Lancaster University, John Turner

Lancaster University, John Turner



Nuclear Single Glazed Door





Atom Double Glazed Door



Unilever, Port Sunlight

Atom Double Glazed Door

The Atom door is a double glazed acoustic glass door made from 6 x 6mm glass bonded together to give a maximum of 41dB.

The nuclear glass door integrates with all of our partitioning systems, however it is used mainly when you have Blue DG partitioning, it gives the best acoustic performance for a glass door on the market.

Available in single or double doors with a maximum height of 3000mm and width of 1100mm per door leaf.

Compatible with integral blinds, manifestation, switch glass, automatic openings and maglock access control.



Atom Double Glazed Door





Atom Double Glazed Door



Manchester Matrix Project



Manchester Matrix Project



Atom Double Glazed Door





St Georges, Manchester

Orbit Glass Sliding Door



Plaza Building, Liverpool

Orbit Glass Sliding Door

The Orbit door is a sliding single glazed glass door made from 1 x 10-12mm glass.

Our top-hung glass sliding door system has been designed to run in front of our glazed screen, solid partition or into the pocket of a double glazed screen.

Single glazed offers zero framework to the sides and base, just a 50mm head track where the glass is clamped in place.

Popular in hospital settings when space is limited and the soft close means the door will never be slammed shut.

High acoustic performance is available in the double glazed sliding door, which includes seals and perfect sizing to achieve a maximum of 34dB.

Available as single or double bi-parting doors with a wide range of ironmongery options.

Soft closing is an easy option for the door and automation possibilities are also available.



Orbit Glass Sliding Door





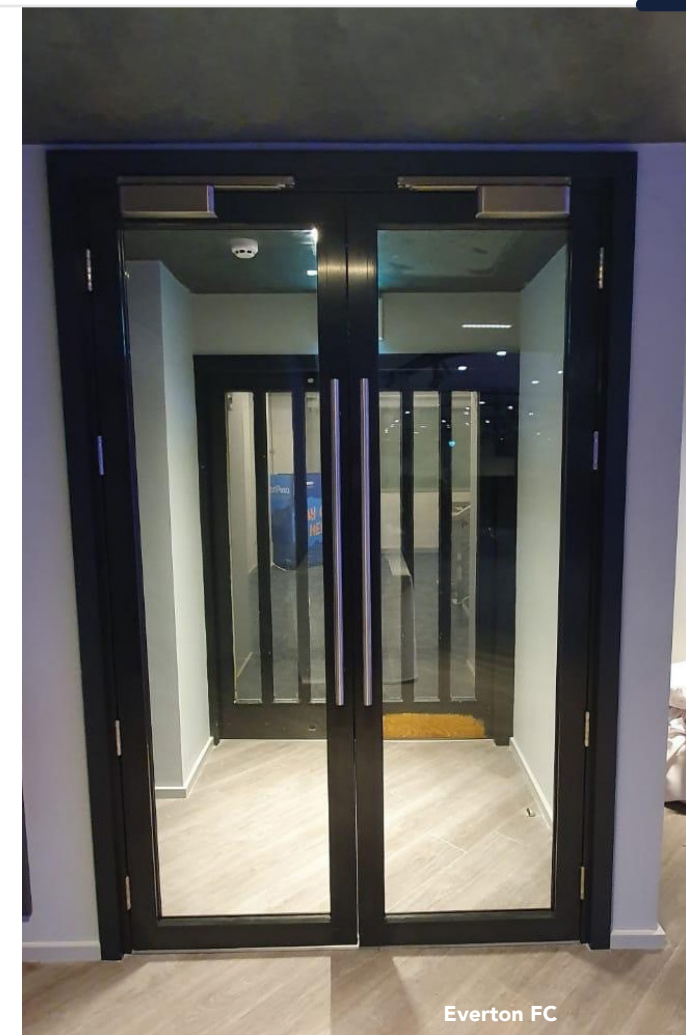
Phoenix Glass Fire Door



Phoenix Glass Fire Door

The Phoenix door is a fire rated glass door made from differing fire glass depending on your requirements. Used mainly when you have Cube Red partitioning, it is the only way to provide a fire rated glass doorset.

Available in integrity only or integrity and insulation for 30, 60, 90 or 120 minutes. Compatible with auto release fire alarm, maglocks and auto opening



Phoenix Glass Fire Door



Lunax, Double door



Lunax, Double door